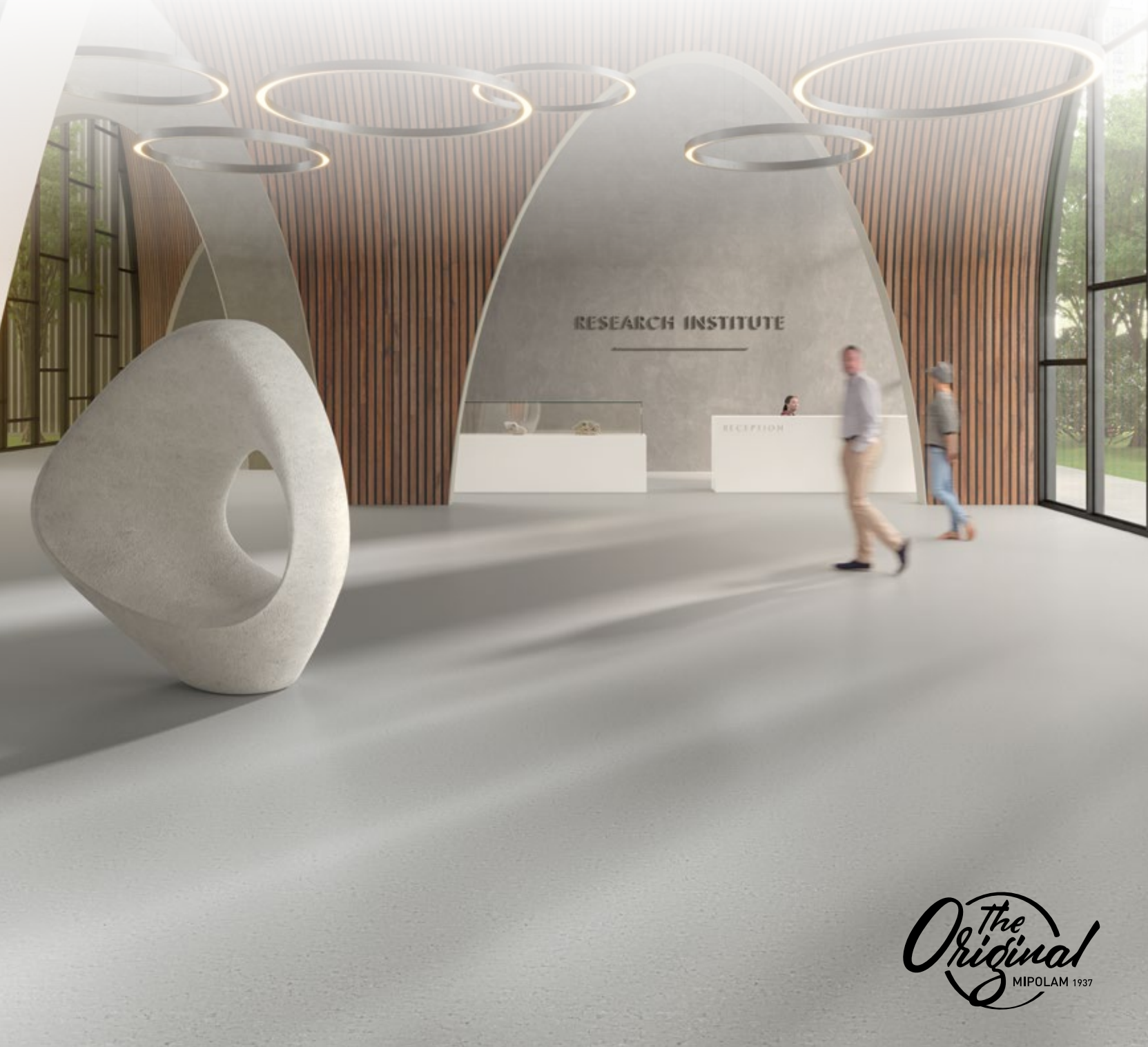


MIPOLAM **evo**

ALTERNATIVE TO PVC - HOMOGENEOUS

gerflor.com

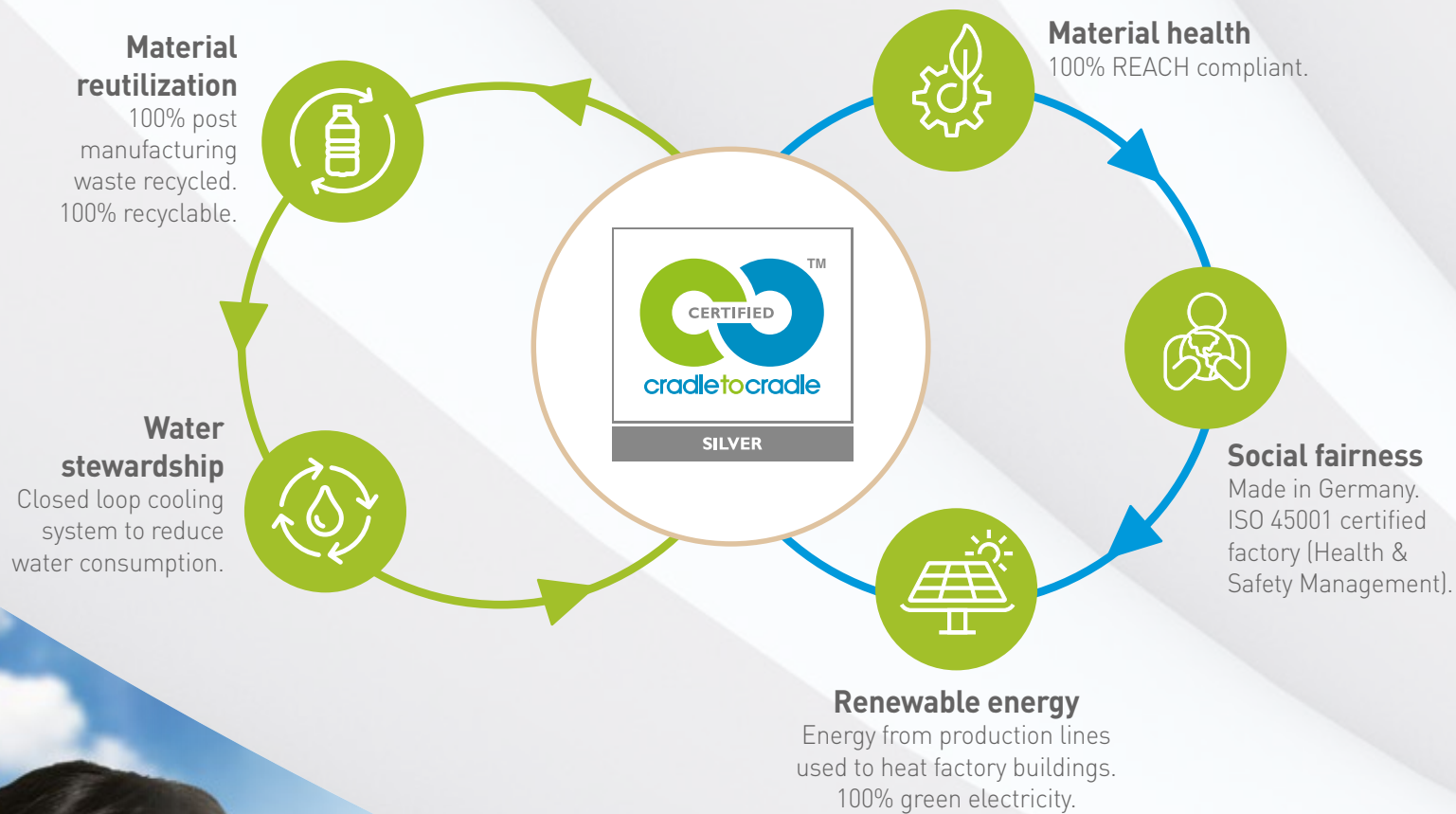


The Original
MIPOLAM 1937

Gerflor[®]
theflooringgroup

DEVELOPED USING CIRCULAR ECONOMY PRINCIPLES

Mipolam Evo is Cradle to Cradle certified™ Silver*



ALTERNATIVE TO VINYL... STILL A MIPOLAM!

MIPOLAM EVO is the result of years of Research carried out by our R&D experts to deliver a new generation of Mipolam homogeneous floors. Made in Germany from an **exclusive blend of resins patented by Gerflor**, **MIPOLAM EVO** is the best solution for customers looking for **alternative products to vinyl**. It provides the same superior **technical and aesthetic performances** as any Mipolam range.



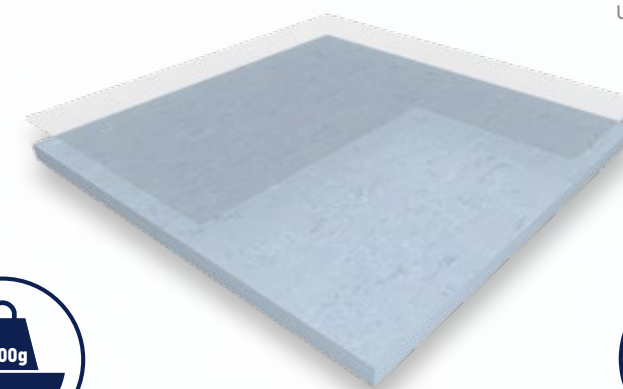
STICK TO SUBSTRATE EASY TO GLUE

Regular backing thanks to sanding process.
Exclusive blend of resins, patented by Gerflor.



STAIN BARRIER EASY MAINTENANCE MATT EFFECT

Evercare™ surface treatment.
100% non porous surface.
Resistant to chemical products used in healthcare environment.



EASY TO INSTALL EASY TO COVE EASY TO WELD

2m width.
Flexible and light weight.
Alternative to PVC welding rods.



HIGH TRAFFIC RESISTANCE 34-43 CLASS LONG LASTING DESIGN

2mm homogeneous wearlayer.
Inlaid design.

INDOOR AIR QUALITY

Very low VOC emissions
TVOC <10 micrograms/m³ (after 28 days)
according to ISO 16000-6

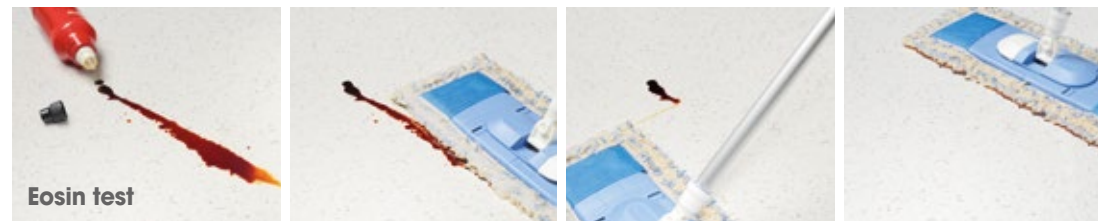


*Cradle to Cradle Certified™ is a registered trademark of the Cradle to Cradle Products Innovation Institute.

evercare™ SURFACE TREATMENT

> EXCLUSIVE GERFLOR PATENTED TREATMENT

> PROVEN EASE OF MAINTENANCE



1

STAIN SHIELD



2

NO WAX FOR LIFE
WATER AND DETERGENT SAVINGS



3

MATT EFFECT



4

ANTIBACTERIAL &
ANTIVIRAL ACTIVITY

According to ISO 22196 & ISO 21702



100% HYGIENE

FLOOR TO WALL SOLUTION

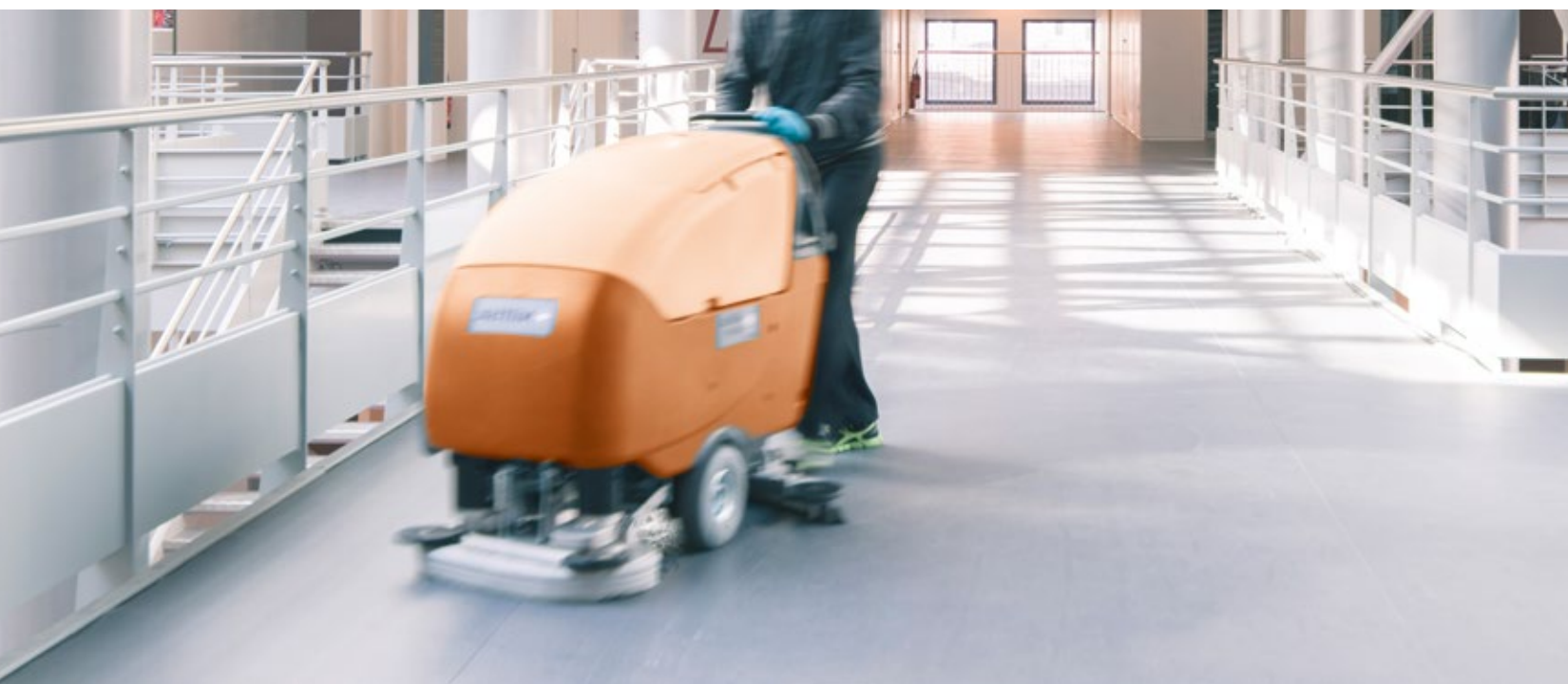
1
2M WIDTH ROLL

2
HOT WELDING

3
COVING

4
FLEXIBLE WALL COVERING
or RIGID WALL PROTECTION

5
HANDRAILS



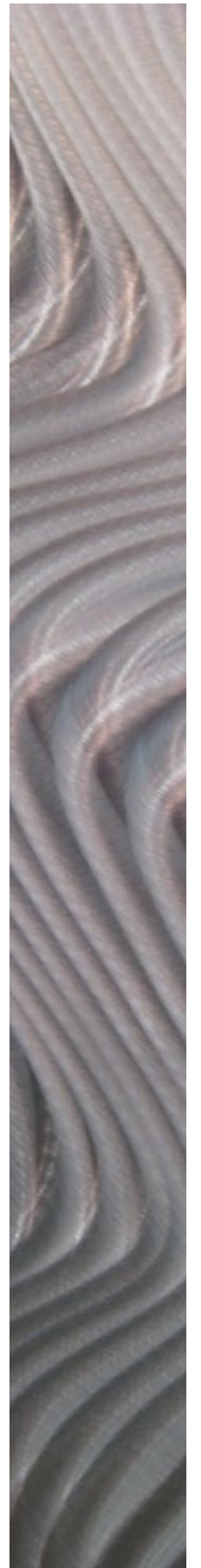
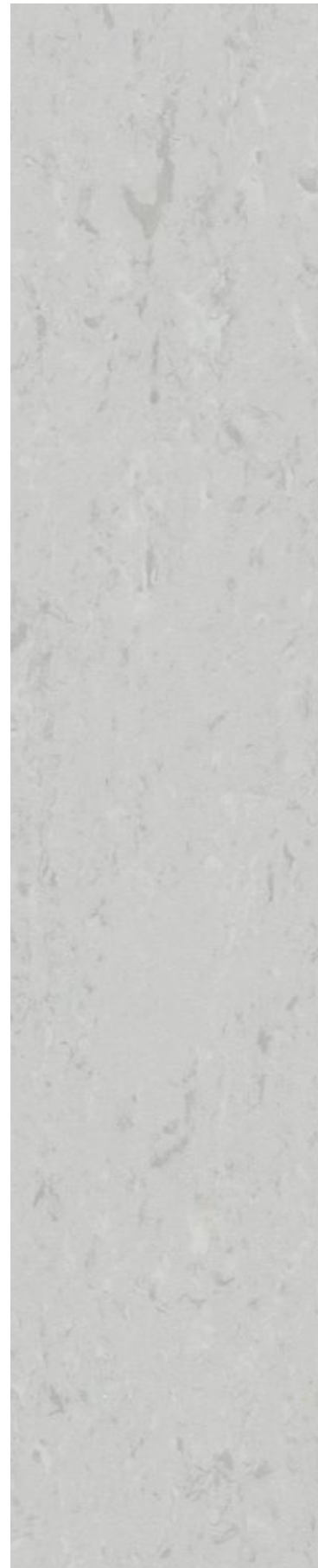
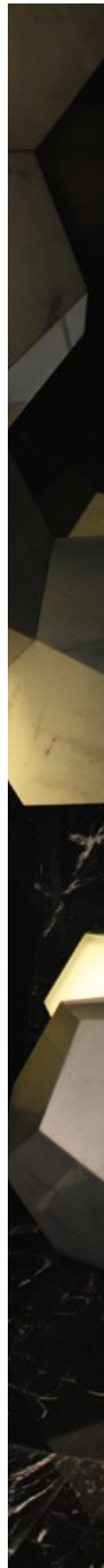
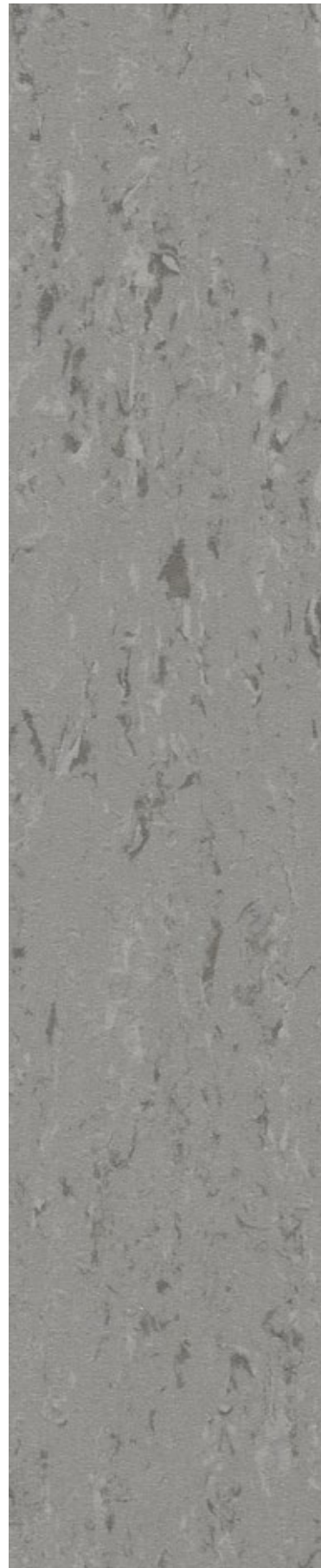
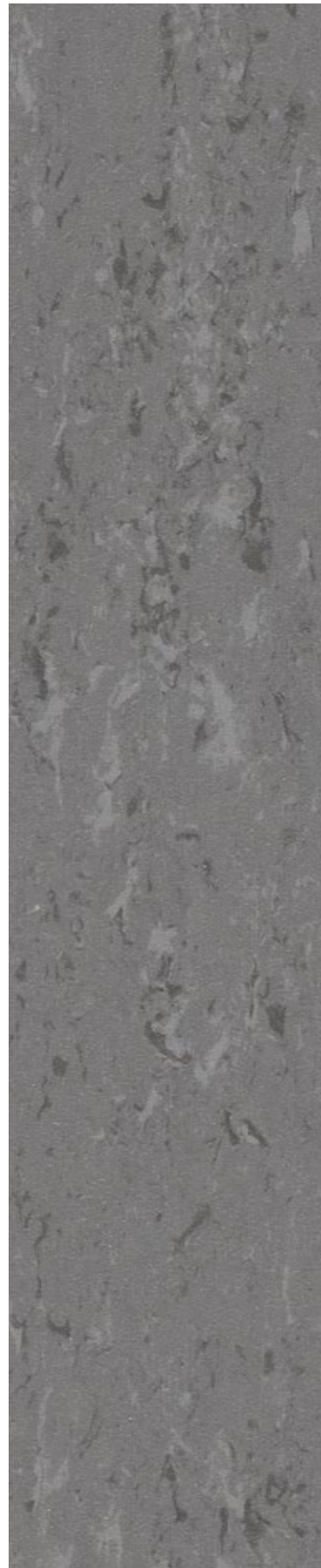
RIGID WALL
PROTECTION PANEL

DECOCHOC STARO
ALTERNATIVE TO VINYL

Thickness: 1.5 mm
Dimensions: 3 000 x 1 250 mm

Junction floor-wall and
between panels with silicone.





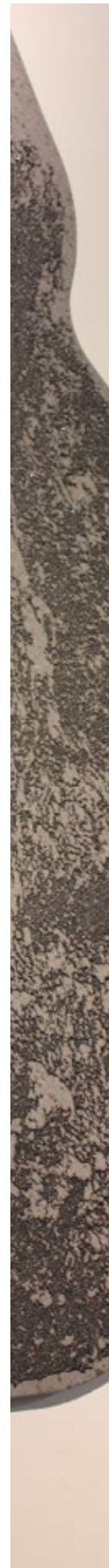
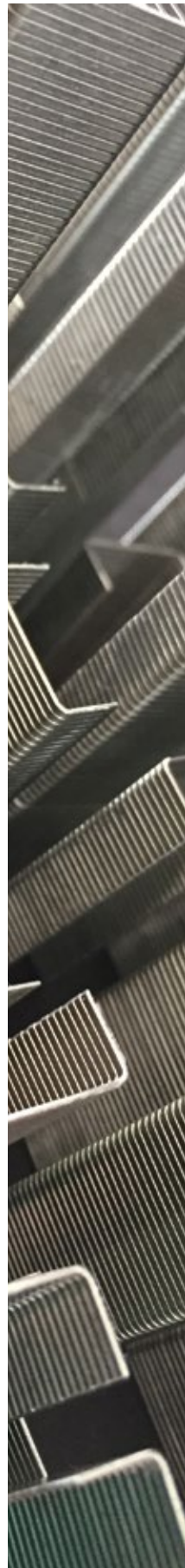
9050 Malmo
NCS: 6000-N / LRV: 16,2

9030 Uppsala
NCS: 4502-R / LRV: 26,4

9029 Tromso
NCS: 4000-N / LRV: 31,7

9009 Trondheim
NCS: 2500-N / LRV: 48,6

9008 Lulea
NCS: 2000-N / LRV: 56,9



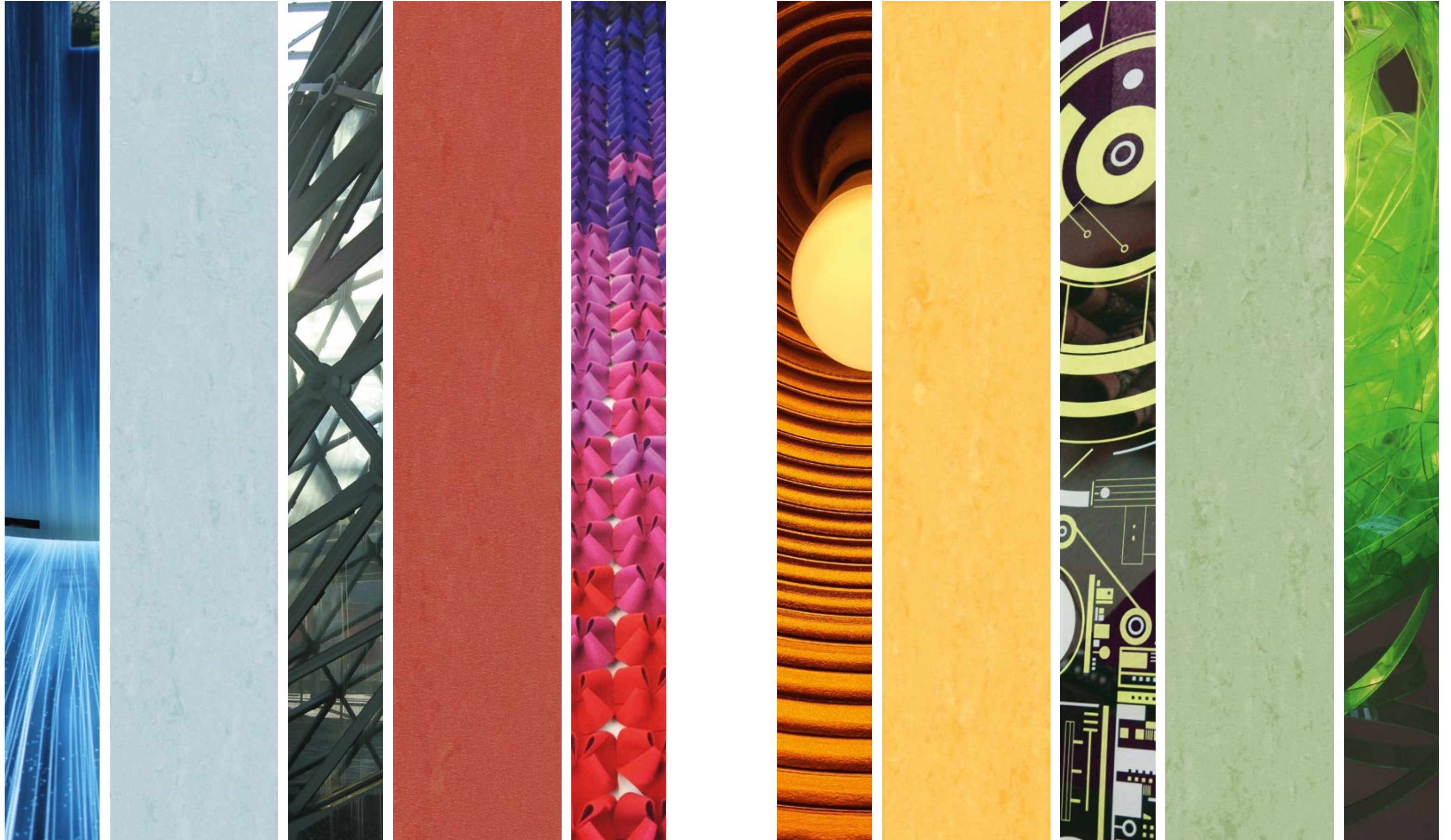
9044 Bergen
NCS: 6502-Y / LRV: 12,6

9045 Gello
NCS: 7005-Y50R / LRV: 9,5

9063 Narvik
NCS: 5005-Y20R / LRV: 22,6

9031 Kiruna
NCS: 2005-Y40R / LRV: 52,4

9005 Visby
NCS: 1005-Y40R / LRV: 70,4



9006 Stockholm
NCS: 2010-B / LRV: 48,7

9055 Goteborg
NCS: 3050-Y30R / LRV: 14,8

9032 Copenhagen
NCS: 1050-Y10R / LRV: 59,9

9027 Oslo
NCS: 2020-G40Y / LRV: 47,4



MIPOLAM EVO

DESCRIPTION

Total thickness	EN ISO 24346	mm	2.0
Weight	EN ISO 23997	g/m ²	2 700
Width of sheet	EN ISO 24341	cm	200
Length of sheet	EN ISO 24341	lm	20

CLASSIFICATION

Norm / Product specification	-	-	ISO 19322
European classification	EN ISO 10874	Class	34 - 43
Fire rating	EN 13 501-1	Class	Bfl-s1
Slip resistance	DIN 51130 / BGR 181	Class	R10
Static electrical propensity	EN 1815	kV	< 2

PERFORMANCES

Dimensional stability	EN ISO 23999	%	≤ 0.40
Impact sound insulation	EN ISO 717-2	dB	5
Residual indentation (norm)	EN ISO 24343-1	mm	≤ 0.10
Residual indentation (average measured value)	-	mm	≈ 0.04
Castor chair test (type W)	ISO 4918	-	OK
Watertightness	EN 13553 Annex A	-	pass
Thermal conductivity	EN ISO 10456	W/(m.K)	0.25
Colour fastness	EN 20 105 - B02	degree	≥ 6
Surface treatment	-	-	Evercare™
Chemical products resistance	EN ISO 26987	class	OK


ENVIRONMENT/INDOOR AIR QUALITY

VOC certification	Blue Angel	-	OK
	Floorscore®	-	OK
	M1	-	OK
TVOC after 28 days	ISO 16000-6	micrograms/m ³	< 10
Antibacterial activity (E. coli - S. aureus - MRSA)	ISO 22196	-	> 99% inhibits growth
Antiviral activity (human coronavirus 229E)	ISO 21702	-	99.7% after 2h 99.9% after 5h

SUSTAINABLE DEVELOPMENT

Certification	Cradle to Cradle	level	Silver
---------------	------------------	-------	--------

CE MARKING

	EN 14041	-	   
---	----------	---	---

The implementation of an effective cleaning method is the best defence against infection.

IMPORTANT: The information contained in this document is valid from 01/05/2022 and is subject to change at any time without notice. In the context of constantly changing technology, our customers are responsible, prior to any use, for checking with us that this document is the version in force.



Rubber leaves indelible stains on synthetic floorings: do not use mats with rubber backing and replace tubular furniture feet with those made of PVC or polyamide. Place mats of sufficient length at entrances to reduce outside sources of dirt.

WE CARE | WE ACT. Our Commitments to a Sustainable future

				
CARBON FOOTPRINT*	BIOSOURCED CONTENT***	RECYCLED CONTENT	ADHESIVE FREE**	ANNUAL VOLUME RECYCLED
-20 % kg CO ₂ equivalent/m ² between 2020 and 2025	10 % by 2025	30 % by 2025	35 % by 2025	60 000 t by 2025

* Scopes 1 and 2 defined in the GHG protocol *** % of activity with biosourced materials ** % of activity - adhesive free solution

